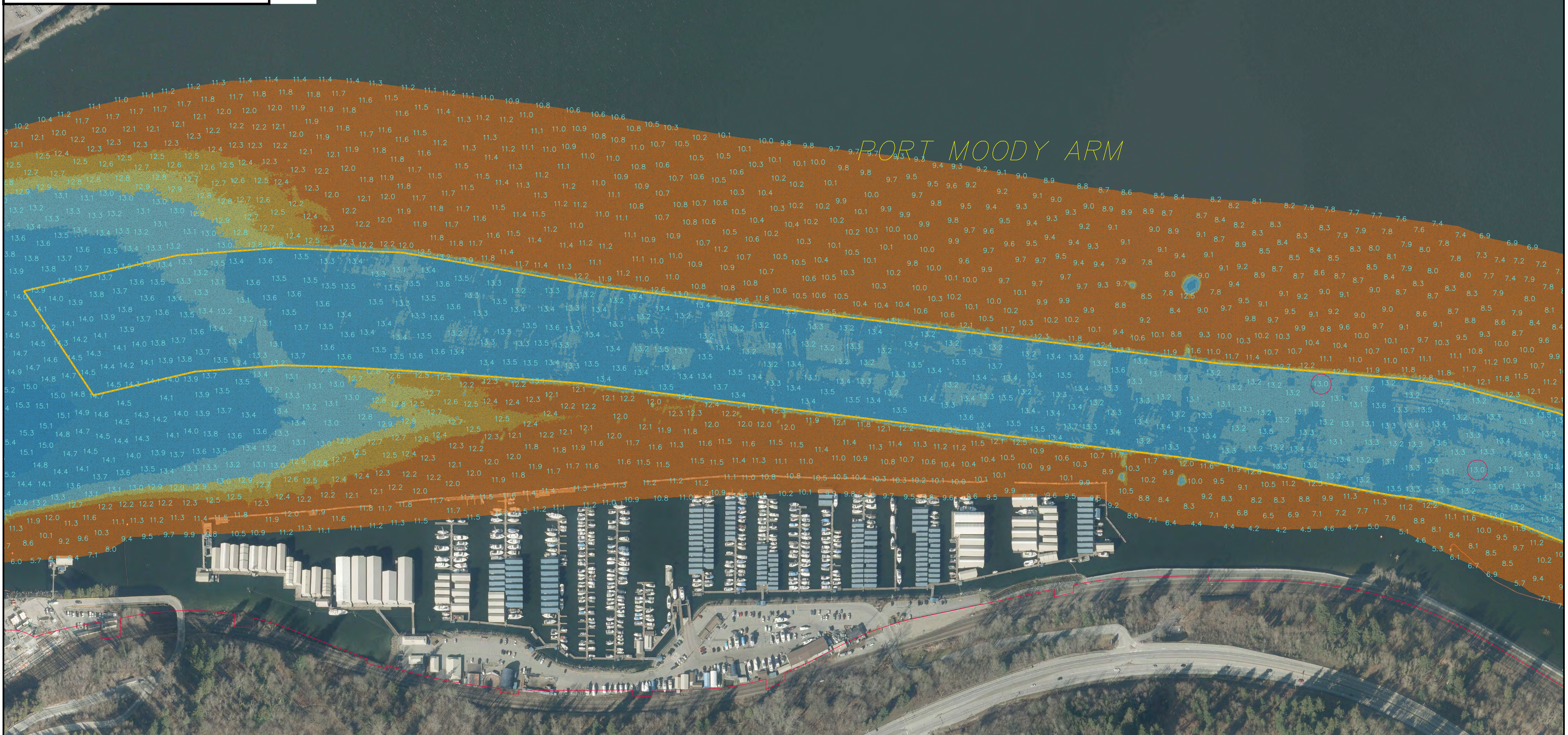
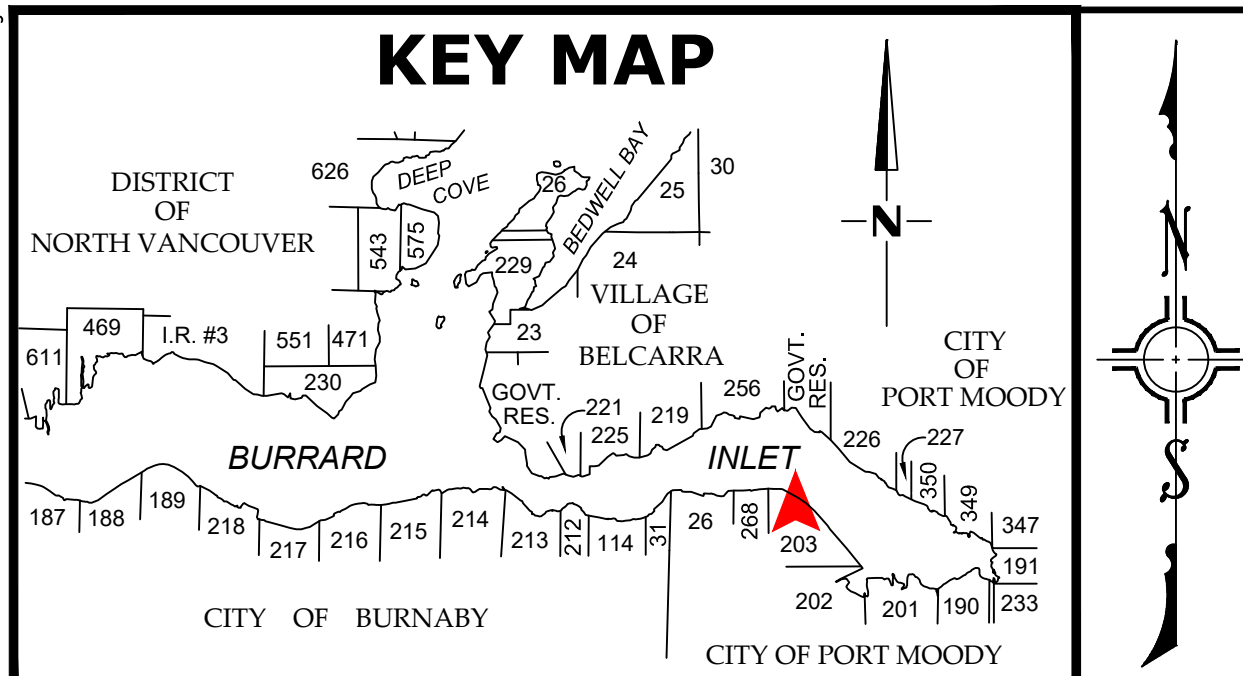


TITLE BLOCK: DL-TE-619



Ref.No.	REFERENCE

NOTES:
 Depths are reduced to CHS Chart Datum
 Soundings are in metres and positioned by DGPS
 Soundings performed by PWGSC on September 19, 2019
 VFPA 2019 Orthophotos

No.	Date	REVISION	Dr'n	Ch'd

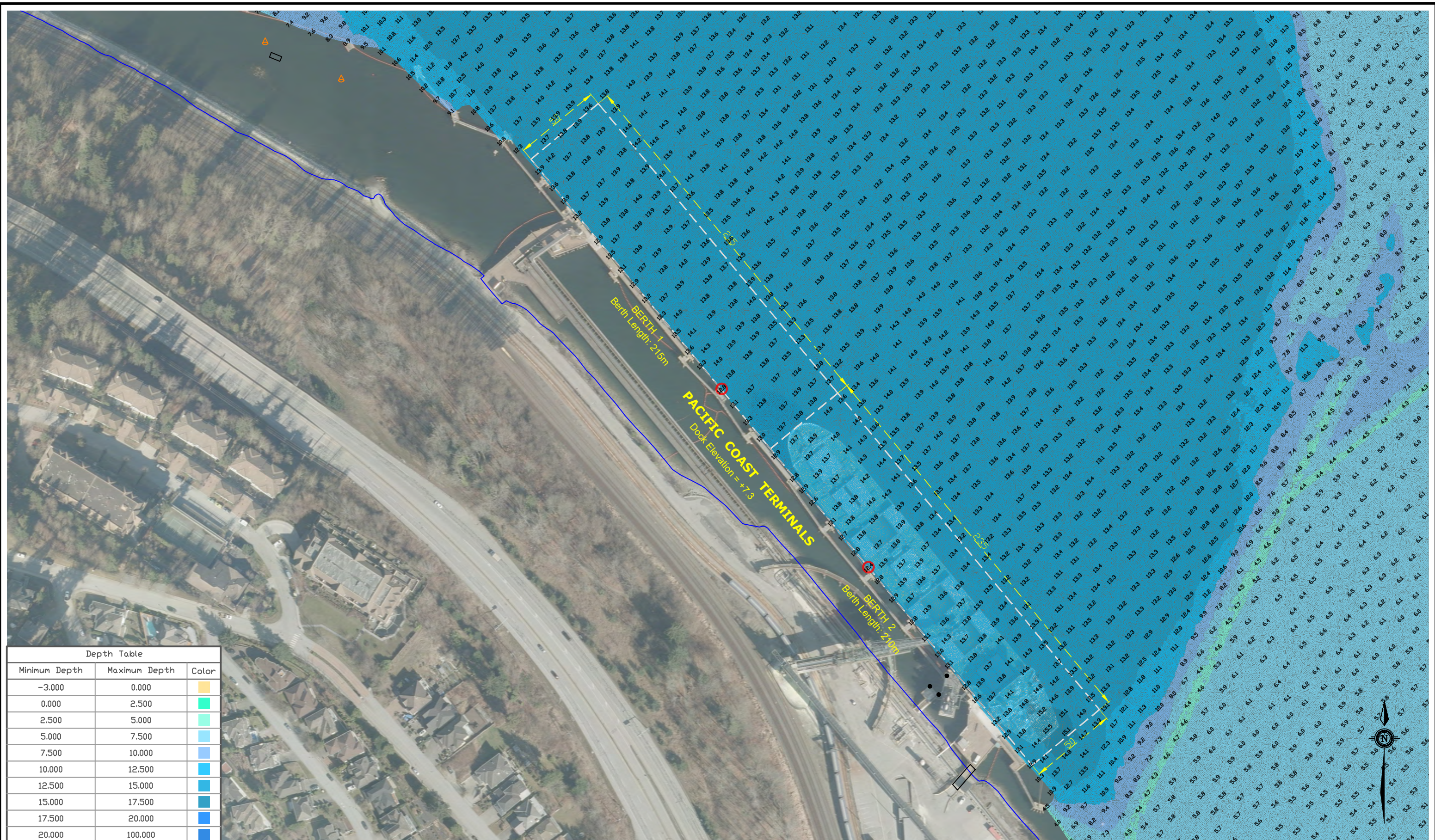
No.	Date	REVISION	Dr'n	Ch'd


PORT of vancouver
 VANCOUVER FRASER PORT AUTHORITY
 ENGINEERING DEPARTMENT

DESIGN BY	
DRAWN BY	DKL
APPROVED	
DATE	07-NOVEMBER-2019
SCALE	1:2500
VFPA SITE	PTM110

PORT MOODY CHANNEL
CONTROL DEPTHS & CHANNEL CONDITION
OVERVIEW
CITY OF PORT MOODY

SIZE	DWG.	SHEET	REV.
D	HYDROGRAPHIC PLAN No. H2019-007	1 of 2	



Minimum Depth	Maximum Depth	Color
-3.000	0.000	Yellow
0.000	2.500	Light Green
2.500	5.000	Green
5.000	7.500	Light Blue
7.500	10.000	Blue
10.000	12.500	Dark Blue
12.500	15.000	Very Dark Blue
15.000	17.500	Black
17.500	20.000	Black
20.000	100.000	Black

NOTES:
 Depths are reduced to CHS Chart Datum
 Soundings are in metres and positioned by DGPS
 VFPA 2019 Orthophotos

Dockface Features

- Fenders: Ladder, Bollard, Camel with Fenders
- Berth Line
- Shore Line
- Buoy
- Piling
- Mooring
- Dolphin
- Shoalest Depth
- 2019 Soundings PWGSC

PROJECTION: Universal Transverse Mercator
 CM: 123° West ZONE: 10
 SCALE: 1:2000 DATUM: NAD 83

NEWEST DATA SURVEYED BY: PWGSC Sept. 19, 2019
 DRAWN BY: DKL Sept. 1, 2017
 CHECKED BY:
 UPDATED BY: DKL Nov. 7, 2019

0 20 40 60 80 100 metres

PORT OF VANCOUVER
 HARBOUR MASTER'S OFFICE

100 The Point
 999 Canada Place
 Vancouver, B.C., Canada
 V6C 3T4

(604)665-9086
 (604)666-6012 (Afterhours)

SOUNDINGS BOOK - BURRARD INLET

PACIFIC COAST TERMINALS

VFPA Plan No. **H2019-000**
 SHEET 15 of 32