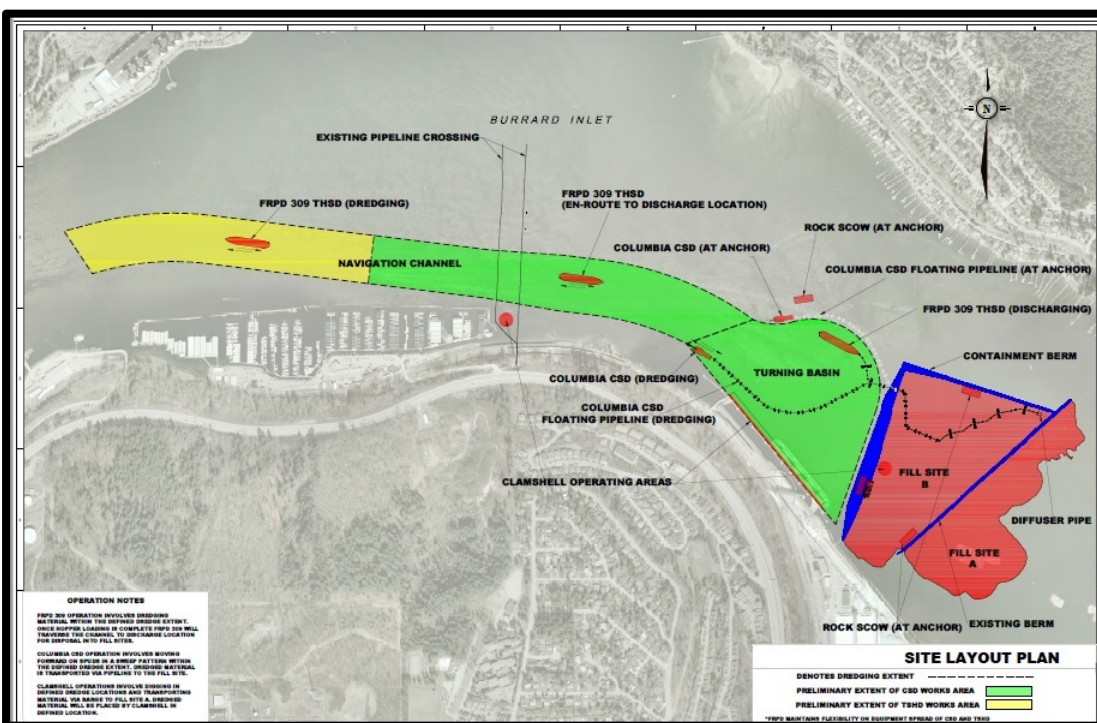


November 12th, 2018

Dredge Works

Pacific Coast Terminals (PCT) is providing the public an update on the next stage of work which will involve dredging the existing deep sea vessel channel from Reed Point Marina to the PCT vessel turning basin (see yellow and green areas on the image below). The goal is to deepen the channel and basin to a depth of 13.5m. Using three types of dredgers, up to 550,000m³ of sediment will be placed inside the containment berm (area shown in red below). The FRPD Columbia will be used for the majority of the dredging works. Dredge equipment and floating pipelines will be visible in the inlet, which will transfer sediment and water from the dredging equipment to the area behind the containment berm.



Working Hours

Dredging is scheduled to start the week of November 19th to 26th and will be ongoing until February 28th, 2019. Daily activities will take place 24 hours a day, seven (7) days a week.

Please note all works will be conducted in conformance with applicable regulatory requirements and permits from the Vancouver Fraser Port Authority, Permit #15-136, Environment Climate Change Canada, Transport Canada and Fisheries and Oceans Canada.

PCT will continue to keep the community updated through our website and our Channels newsletter. Should you require additional information on the terminal expansion and construction project, or if you would like to register a concern with the project, please visit our website www.pct.ca or call 604-939-7371. After business hours please call 604-931-9211. Thank you for your continued patience.