

# channels

A Pacific Coast Terminals publication for the residents of Port Moody



## PCT Begins to Grow its Business

In 2012, PCT announced expansion plans that would add the handling of canola oil at our terminal in Port Moody. At this time PCT has applied to Port Metro Vancouver to begin the expansion to accommodate canola oil, to reconstruct the current primary water treatment facility and to undertake dredging within Burrard Inlet.

### Accommodating Canola Oil

PCT has reached an agreement with Bunge Canada to construct and operate a new canola handling facility, which will necessitate modifications to existing infrastructure and additions of new equipment, all of which will be contained within the existing site.

The existing liquid unloading facilities will be modified to unload canola railcars and three new storage tanks

will be constructed. A new pipeline will be added to transfer canola oil from storage tanks to vessels.

Modifications to the berth dock facilities will be necessary to accommodate a new articulated loading arm.

The project will result in minor to no environmental impact from construction through operational phases.

**Residential impact:** Residents might observe the construction of the new storage tanks located on the east side of the site, close to existing sulphur structures. Residents might also observe the modifications to the berth and will hear necessary pile-driving during daytime hours for a 4-5 day period. When dates of pile-driving are confirmed, a notice will be sent to all Port Moody households.

### What is Canola?

Canola is a yellow flowering plant, which produces seed-filled pods that are rich in oil. These seeds are crushed and pressed yielding the high-value oil consumed worldwide.

The Bunge canola oil that will be handled on the PCT site is a food-grade vegetable oil which is non-toxic, non-flammable and non-reactive.

It is anticipated that PCT will handle over 400,000 metric tonnes of canola oil annually, on its way to markets primarily in Asia.

### Permitting Process

PCT has prepared a Project Permit Application to Port Metro Vancouver (PMV) outlining the modifications to our existing site. It includes an Environmental Assessment Document (EA) that examines impacts and outlines environmental mitigation strategies. PCT has applied to PMV for a project permit as they are the permitting authority with jurisdiction over the project. PMV will review the application and consult with First Nations, the City of Port Moody, Metro Vancouver, Province of BC and Federal Regulators, obtaining input before approving or denying PCT's permit application.

Additional information on the process can be found at [www.portmetrovancover.com](http://www.portmetrovancover.com).

PCT will also apply to Metro Vancouver to amend our water discharge and air emissions permits.



### Water Treatment Facility

Currently all water collected on site is pumped to a settling pond prior to being treated and recycled or discharged into the Metro Vancouver sewer system.

PCT is replacing the current settling pond with a water clarifier to more efficiently handle its wastewater. The clarifier will also improve wastewater quality before it is discharged to the sanitary sewer system. Photos of the current settling pond and the proposed clarifying system are shown below.

The settling pond will be decommissioned and the space used for further expansion of our operations.

**Residential Impact:** Residents may observe construction of one large tank and one smaller tank adjacent to the existing settling pond. Construction traffic (primarily trucks) may be observed and heard throughout the construction period.



Current settling pond



New water clarifier

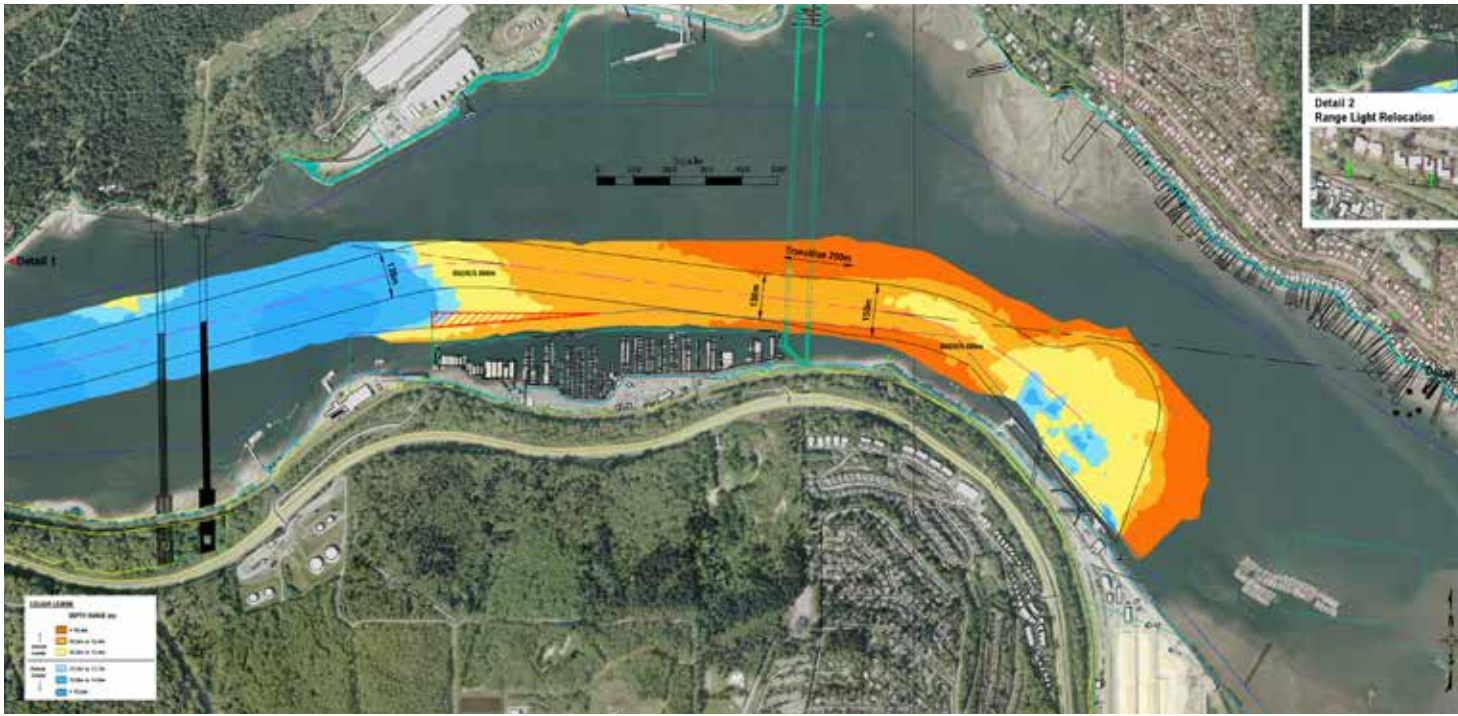
### Growing Our Business Open House

THURSDAY, SEPTEMBER 19TH

Old Mill Boathouse, 2715 Esplanade Ave., Rocky Point Park, 6 – 8 pm



We are inviting Port Moody residents to come and learn more details about our expansion plans and what it will mean for the community. Through static and multimedia displays and a powerpoint presentation, we will highlight planned changes as a result of handling canola oil onsite, replacing our water treatment facility and undertaking dredging of the Burrard Inlet. PCT staff will also be available to answer questions. Doors open at 6PM, formal presentation at 7PM.



Planned dredge area in the Burrard Inlet

## Dredging Of Burrard Inlet

Current vessel navigation to and from PCT through Burrard Inlet is highly dependent on the tides which impose both safety and economic restrictions. PCT is planning to use an assortment of dredge equipment to increase the depth of the channel from -10.5m to -14m. This added depth will consequently allow loaded vessels to safely sail across four tides per day rather than one.

A Project Environmental Review Document has been prepared for review by Port Metro Vancouver as part of the permit process.

A similar dredge was last conducted by PCT in 1995 when 280,000 m<sup>3</sup> was dredged and placed behind a sub-tidal berm that was constructed adjacent to the ship turning basin.

The current plan is to operate 24 hours a day, 7 days a week for approximately one month in the fall of 2014 to relocate approximately 530,000 m<sup>3</sup> of sediment for placement within the existing containment berm (built in 1995) and a new containment berm which will be constructed prior to dredging. Once the new berm is completed, dredging will commence.

The picture shows the planned dredge area where blue indicates deeper areas and orange brown areas indicating shallower areas. The dredge will take place between the two parallel black lines from the west side of the marina for approximately 1.5 kilometer to the opening of the semi-circular turning basin in the east. The dredge area width will be approximately 130 metres.

A variety of dredging equipment will be used including Clamshell, Hopper and Cutter Suction dredges.

Benefits include improved vessel safety and vital business process efficiency at PCT through more timely and safer shipping, minimal to no residual environmental impact; and local fish habitat restoration.

**Residential impact:** Residents may observe the dredging equipment in place, variably located between the west side of Reed Point Marina through to the placement areas located in front of PCT. Residents will likely hear the dredging operations which will be undertaken on a 24 hour/7 day a week schedule for a limited period of time. When the dates of the dredging are confirmed, a notice will be sent to all Port Moody households.

## PCT Performance Stage Showcasing Local Talent

Earlier this year, PCT partnered with the City to support arts and culture with a sponsorship agreement that saw the naming of the PCT Performance Stage in Rocky Point Park. Since then, the stage has been busy every weekend with local artists showcasing their talents.

The PCT Summer Sunday Concert series has ended for the 2013 season concluding a run of eight concerts on the stage throughout July and August. Golden Spike Days had four fun-filled days of events and the City of Port Moody hosted centennial concerts including the ever-popular Abracadabra.

The financial support provided by PCT also allowed for the funding of local youth bands to host the first annual Wave Festival, highlighting four local youth bands, on August 31st.

PCT is looking forward to what the 2014 summer season might bring!



## Community Connections

This regular section is dedicated to showcasing some of our partnerships and providing important information to the residents of Port Moody.

### EAGLE RIDGE HOSPITAL FOUNDATION EVENING OF CARING

Saturday, September 28th  
www.erhf.ca

### PORT MOODY ARTS CENTRE BEST OF BC WINES UNCORKED

Saturday, November 2nd  
www.pomoarts.ca

### DOUGLAS COLLEGE FOUNDATION A CLASS ACT

Friday, October 18th  
www.douglas.bc.ca

### CROSSROADS HOSPICE TREASURES OF CHRISTMAS

Saturday, November 23rd  
www.crossroadshospice.bc.ca

## Community Open House Prize Winners

Three Port Moody residents were lucky winners of our prize draws which included:

- Tracks in Time, Port Moody's latest coffee-table book highlighting 100 years of history
- Case of BUNGE canola oil
- Pair of tickets for Canucks game in 2014, in clubseats



## Contact

Channels is published three times per year by Pacific Coast Terminals Co. Ltd.  
2300 Columbia Street, Port Moody,  
BC Canada V3H 5J9

Your comments and contributions are welcome. Please forward them to us at:

EMAIL [feedback@pct.ca](mailto:feedback@pct.ca)  
TEL 604-939-7371

[www.pct.ca](http://www.pct.ca)