

August 14th, 2018

Notice of Marine Construction

Pacific Coast Terminals (PCT) is reminding the local community about our two-staged marine construction activities that are being undertaken to enable safer and more efficient bulk carrier (vessel) movement to and from our docks. The first phase of activity, berm construction, was conducted in January and February 2018.

In the coming weeks, Fraser River Pile and Dredge (FRPD) will be completing construction of the underwater sediment containment berm. You will see a crane, delivery barges with quarry rock and tugs working together to carefully place the final protective exterior of the berm.

The second stage of work will involve dredging the existing deep sea vessel channel from Reed Point Marina to the PCT vessel turning basin (see image below for more detail). The goal is to deepen the channel and basin to a depth of 13.5m. Using three types of dredgers, up to 550,000m³ of sediment will be placed inside the containment berm. The FRPD Columbia will be used for the majority of the dredging works. You will see floating pipelines which will transfer sediment and water from the dredge site to the contained disposal site.

Working Hours

Marine berm construction will start August 15, 2018 for approximately three (3) weeks excluding weekends and statutory holidays. Daily activities will take place from 7:00 am to 8:00 pm.

Dredging will occur 24 hours a day seven (7) days a week beginning September 10, 2018 for approximately 10-12 weeks, excluding October 8 (Thanksgiving) and November 11 (Remembrance Day).

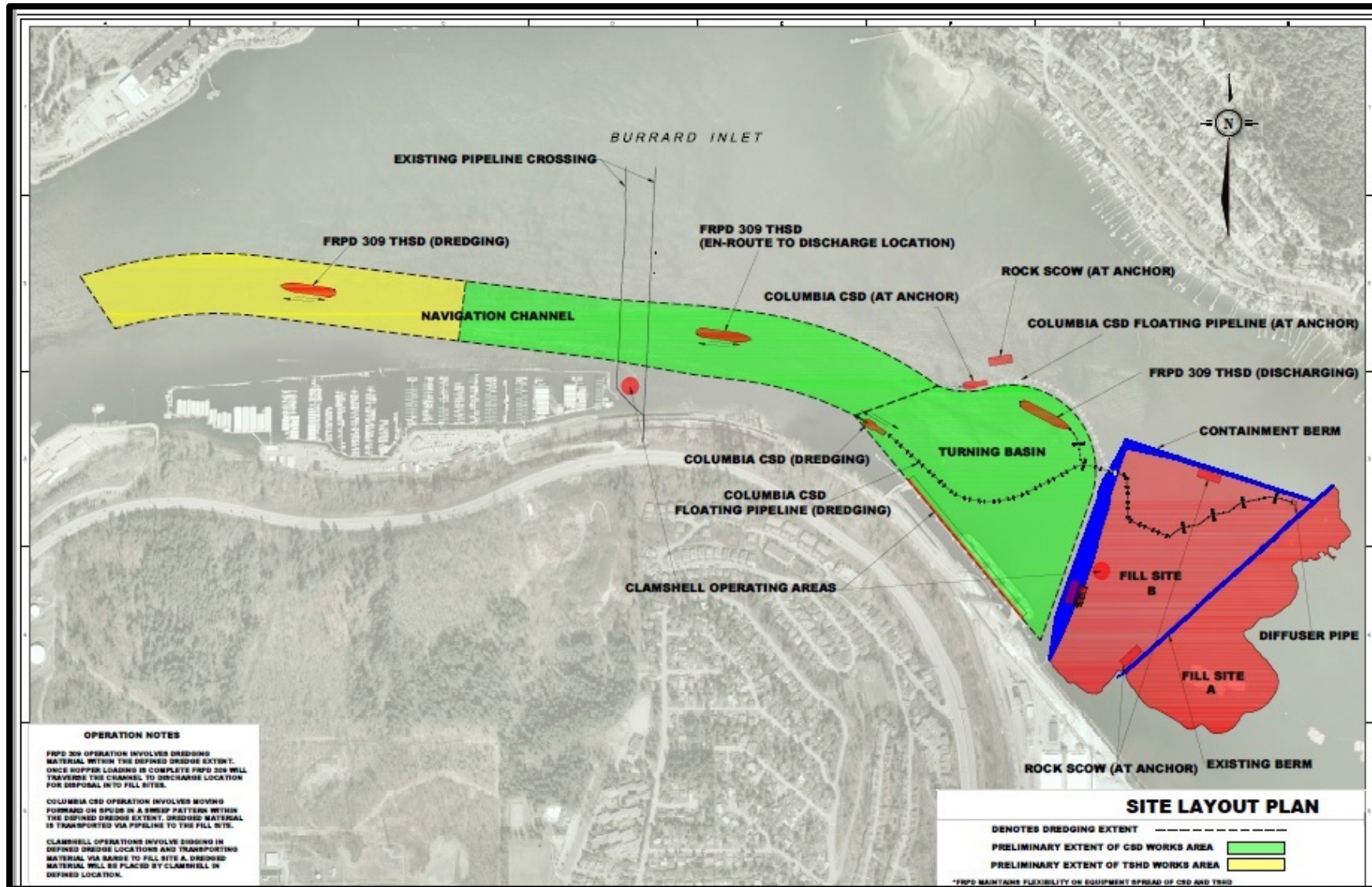
Please note all works will be conducted in conformance with applicable regulatory requirements and permits from the Vancouver Fraser Port Authority, Permit #15-136, Environment Climate Change Canada, Transport Canada and Fisheries and Oceans Canada.

Work Site Location

The image on the next page illustrates where dredging equipment will be operating and the location of the new marine sediment containment berm. The new berm will be located just east of the vessel turning basin and will intersect the existing berm that was built in 1995. The berms will provide a combined capacity of 611,000m³ which includes extra space for the sediment to settle.

PCT will continue to keep the community updated through our website and our Channels newsletter. Should you require additional information on the terminal expansion and construction project, or if you would like to register a concern with the project, please visit our website www.pct.ca or call 604.939.7371. After business hours please call 604-931-9211. Thank you for your continued patience.

For questions regarding the port authority's permitting process, please contact their Permit Comments line at (604) 665-9570 or per@portvancouver.com.



This Notice is printed on paper made from 100% post-consumer waste. Please recycle